

How do I access the advanced nutritional analysis reports?

Purpose:

To obtain the seven additional food intake analysis reports.

Three of these reports provide separate analysis of the mineral nutrients, vitamins and energy components.

There are also three separate chart reports of the mineral nutrients, vitamins and energy components.

There is also an alternative personal profile report. Note that for this report you will need to set up your personal details - see personal profile set-up instructions below.

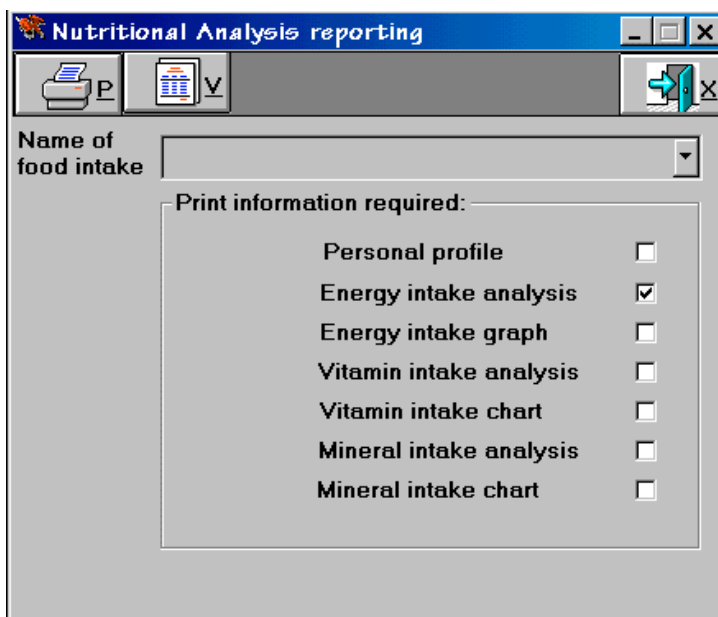
Procedure

From the main menu bar,




select **Food-Intake**, then select **Advanced nutritional analysis**.

A window is displayed as shown below:



If the name of food intake is not the one you want to print then select from the drop-down list.

Select the "Print information required" options as shown above by clicking on the report(s) required.

Having selected the food intake to be printed and the report options click the  button. A preview of the first report selected in the list above is displayed as shown in the example below:


Energy intake analysis

1 of 1 50% Total:3 100% 3 of 3

Energy Intake

Amount	ENERGY	ENERGY	PROTEIN	FAT(g)	Fat(g)	Fat(g)	Fat(g)	CARBO-	Fibre	ALCOHOL	
(g)	(kJ)	(kcal)	(g)	TOTAL	Daily	Mean	Standard	HYDRATE(g)	(g)	(g)	
Monday											
Leach											
CHICKEN CURRY, AUSTRALIAN STYLE	1253.00	1,520.53	363.41	27.07	21.25	3.54	9.11	6.33	16.45	1.77	0.00
CURRY SAUCE FROM BASIC ING											
RISE WHITE, SOLEDSUNWHITE	190.00	991.50	237.04	4.37	0.38	0.00	0.00	0.00	53.20	0.95	0.00
SUNLONG, MAHATMA, PAKISTAN BASM											
BEER, ALE	377.00	569.27	136.06	1.51	0.00	0.00	0.00	0.00	5.28	0.00	15.46
Leach Total:	3,081.00	736.51	32.95	21.63	3.54	9.11	6.33	74.92	2.72	15.46	
% of daily total:	100.0%	100.0%	100.0%	100.0%	100.0%	100.0%	100.0%	100.0%	100.0%	100.0%	
Monday Total:	3,081.00	736.51	32.95	21.63	3.54	9.11	6.33	74.92	2.72	15.46	
TARGET DAILY VALUES	14,019.50	3,349.20	45.00	113.50	37.80	37.80	37.80	462.60	30.00		
Excess or deficiency (-)	0,937.90	2,612.69	-12.05	-91.87	-34.26	-28.69	-31.48	-387.68	-27.28	15.46	
Percent of target (%)	22.0%	22.0%	73.2%	19.1%	9.4%	24.1%	16.7%	16.2%	9.1%		



Note that if more than one report has been selected then only the first one is displayed.

When you have finished previewing the report select the  button in the top right corner of the window to exit.

Before printing make sure that the printer is switched on and ready to print.

Select the  button. The following window will be displayed:

Print Options


 


Send to:


Printer File

Send to printer

Copies

select the  in this window to print the report you have selected.

click the  button to leave the Print Options window.

click the  button to leave the Nutritional Analysis report window.

Personal profile set-up instructions

Important note:

You need to log off and log on to SERVE as user SUPERVISOR and password ADMIN before continuing with this process:

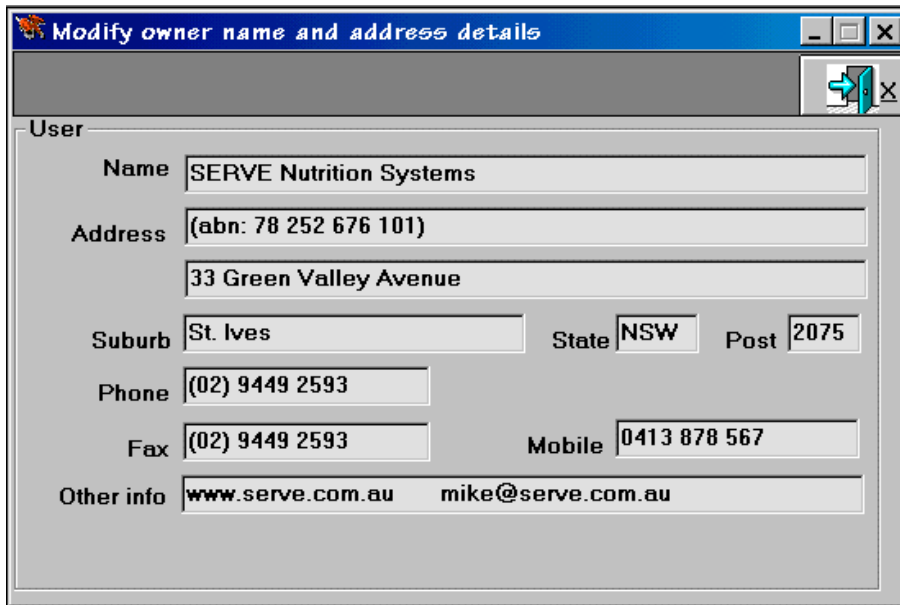
Procedure

From the main menu bar,




select **General**, then select **Owner Details**.

A window is displayed as shown below:

A screenshot of a dialog box titled "Modify owner name and address details". It contains a "User" section with the following fields:

- Name: SERVE Nutrition Systems
- Address: (abn: 78 252 676 101)
33 Green Valley Avenue
- Suburb: St. Ives, State: NSW, Post: 2075
- Phone: (02) 9449 2593
- Fax: (02) 9449 2593, Mobile: 0413 878 567
- Other info: www.serve.com.au mike@serve.com.au

A button with a right-pointing arrow and a close icon is located in the top right corner of the dialog box.

Fill in your details, and when completed click the  button to leave the Owner details window.

You now need to exit SERVE and log in again before using the procedure on the previous pages to obtain your advanced nutritional analysis reports.